



Connect
BEVERLY HILLS

Project Advisory Committee
Traffic and Parking Commission
March 4th, 2021

The background is a grayscale photograph of a city street. On the left, a large, multi-story building with many windows is visible. A sign on the building reads "WALTER G. McCARTY CORPORATION REALTORS". The street runs diagonally from the bottom left towards the top right. There are palm trees and other buildings in the distance. The overall scene is a typical urban street view.

AGENDA

Project Overview.....3 min

Draft Design Standards.....40 min

Project Overview

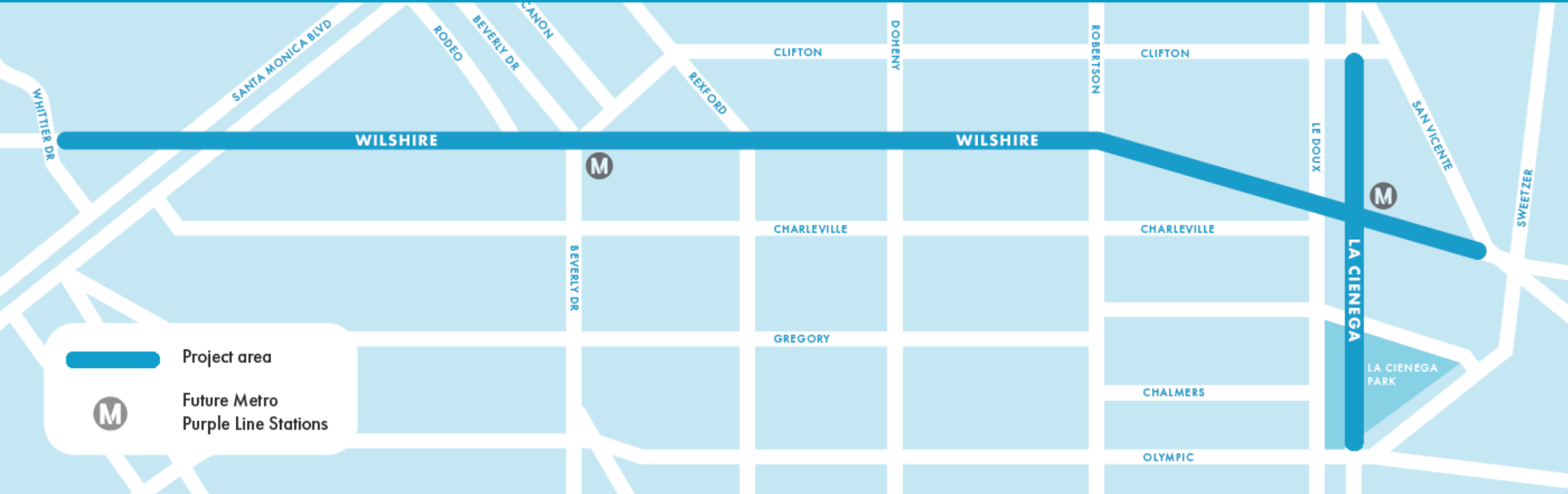
Project Background

What is Connect Beverly Hills?

- Streetscape Plan
- Design Standards
- Mobility Hub Plan



Project Limits



Today's Action Items

- Provide feedback on two options for full draft design standards



Questions to consider

- Do you think the design standard options are representative of Beverly Hills?
- From a Mobility and Pedestrian experience perspective, is there a preferred design standard option in each category of sidewalk amenity? If not, what stylistic or aesthetic features are missing from the options?
- Do you support use of these street standards along Wilshire and La Cienega Boulevards?
- Would you support using these street standards on other corridors in the City?



Draft Design Standards

Draft Design Standards

- Standards for streetscape elements like lighting, street furniture, landscaping and more that **improve comfort and walkability** along Wilshire and La Cienega Boulevards.
- Combined with infrastructure improvements, design standards help make the boulevards **more accessible and vibrant places for all modes.**



Public Comment: Community Survey

Modern and updated, yet classic

I think it should be more contemporary to reflect the values of the City we live in

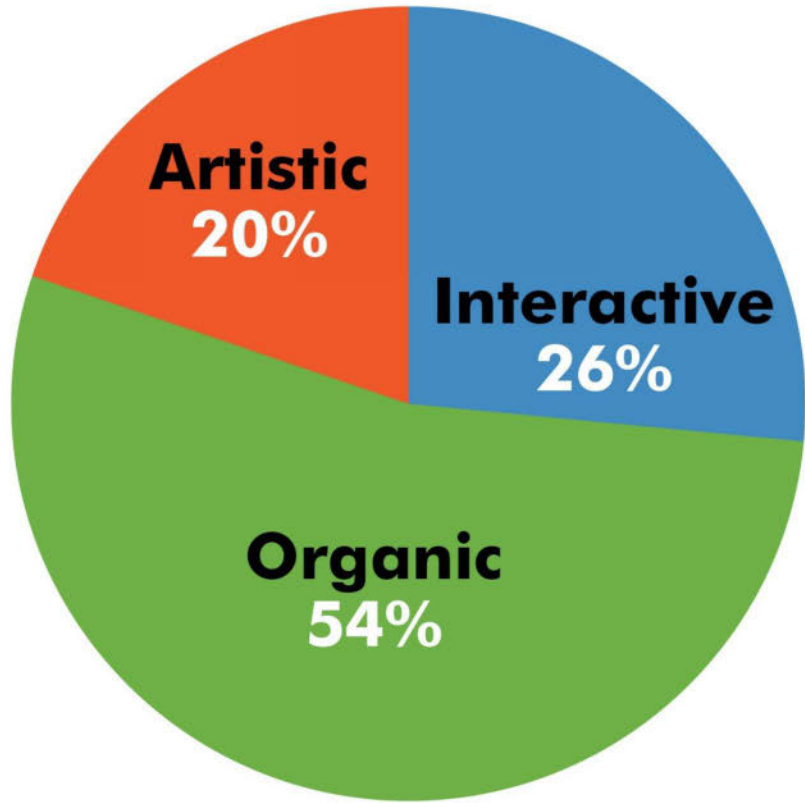
Should be contemporary to fit sustainability goals of Beverly Hills

Reflect the place – Beverly Hills, SoCal

It could use an upgrade for a fresher look and to create areas with a sense of place.

New, exciting and evolving

Public Comment: Community Survey



The Design Standards and Streetscape Palette options are directly informed by public community input and guidance from the City of Beverly Hills staff. The online Community Survey asked respondents to identify their preferred "look and feel" of the future furnishings for the corridors. The majority selected "Organic City" to guide the more detailed streetscape palette selections.

Authentic Beverly Hills - Organic

elegant

garden

stylish

refined

classic



Beverly Canon Gardens



Historic Aerial, 1919



Spanish Steps, Rodeo Drive



The Beverly Wilshire



Virginia Robinson Gardens



Iconic 76 Gas Station



Sunset Park (Will Rogers Memorial Park)



Pacific Mercantile Bank Building & Courtyard



Perpetual Savings Bank Building



Beverly Hill Hotel



"Home" (1992) Charles Arnolci

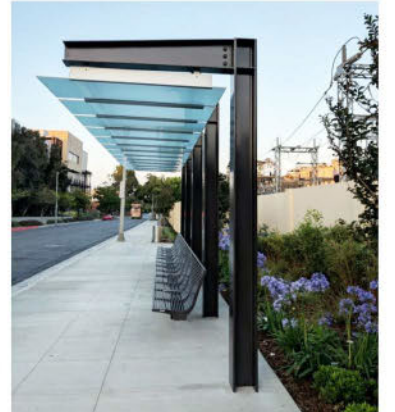


9570 Wilshire

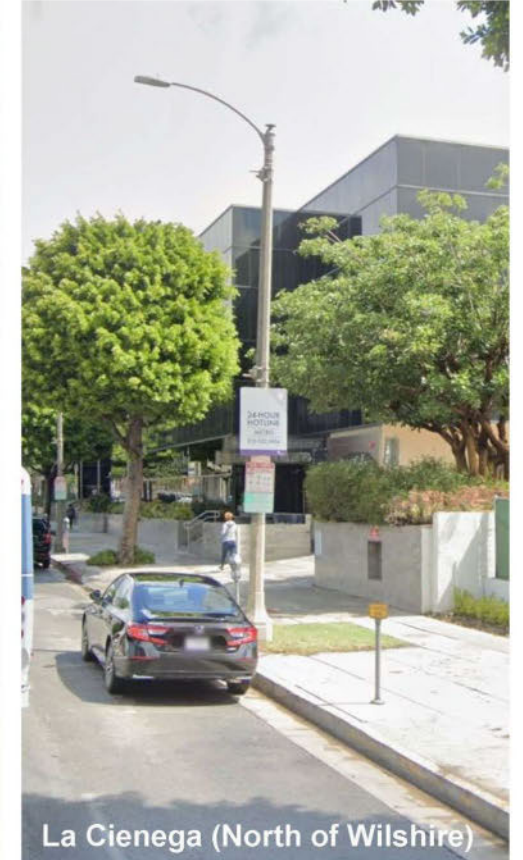
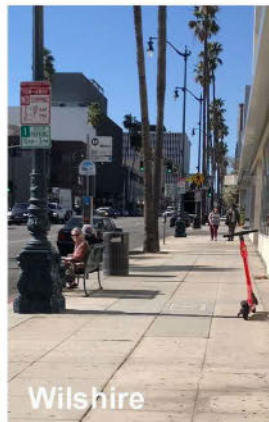


"Spiral of Life" (1985) Baile Oakes

Existing Street Furnishing



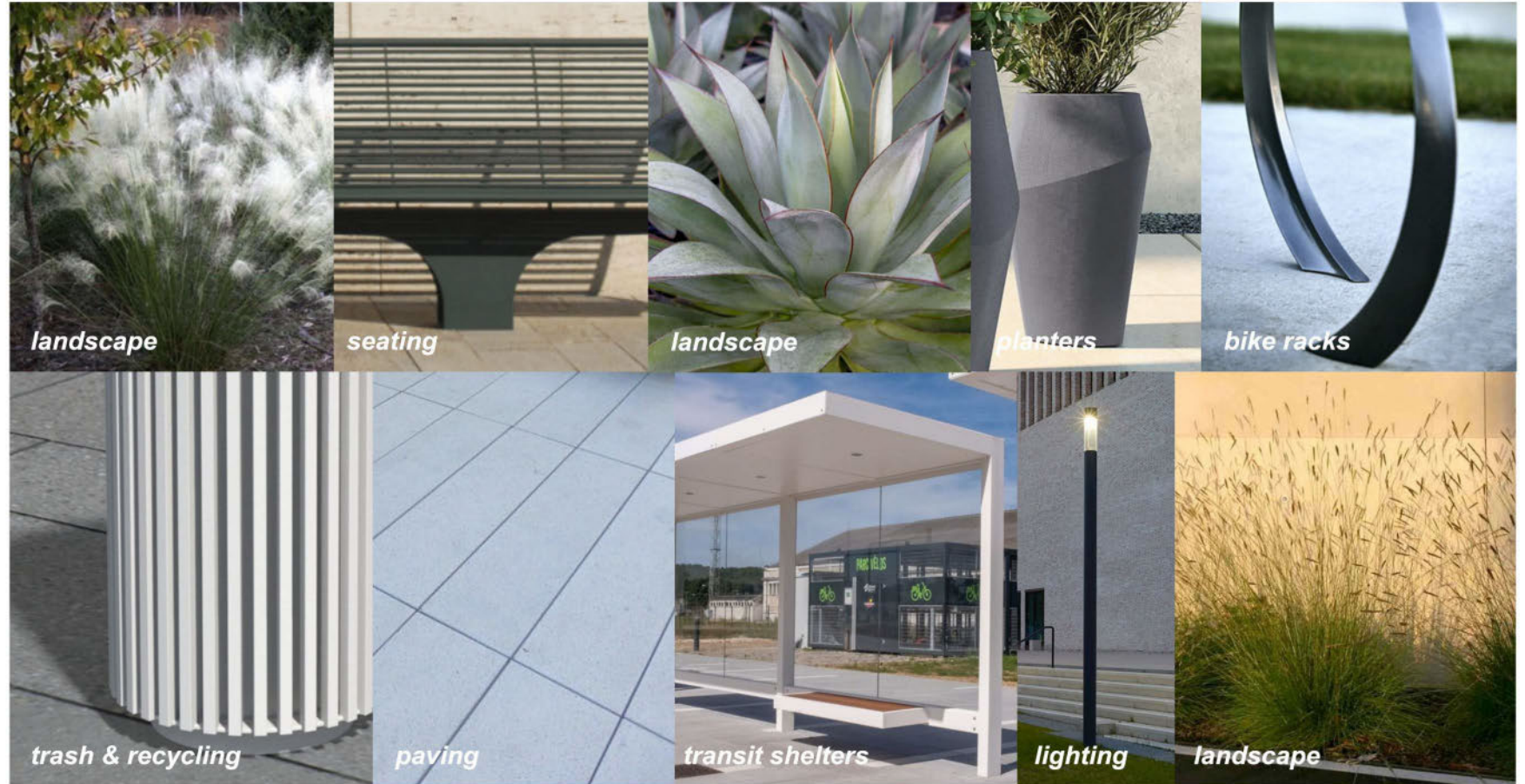
Existing Streetscape



Streetscape Palette: Mood Board

The streetscape palette will bring together a collection of elements, colors, materials, and finishes to create a cohesive streetscape. Together, this palette will upgrade the corridors to embody an elegant and refined look that is still authentically Beverly Hills.

- Seating
- Trash & Recycling
- Bike Racks and Repair Stations
- Planters
- Transit Shelters
- Lighting
- Signage & Wayfinding
- Paving
- Landscape



Seating | Typical Bench and Seating Family

Option 1: Benkert Banke "Siardo"



- Same Bench Family as 3rd Street Bus Station
- Stainless Steel Round Tubes – Very Durable
- Arched Base Design – Simple, Elegant, Modern
- With or Without Armrests, and With or Without a Back
- Single Seat Option Available with Slightly Different Profile

Option 2: Mmcite "Emau"



- Stainless Steel Round Tubes Join Seat and Back – Very Durable
- Modern silhouette with precise, classic details
- With or Without Armrests
- Single Seat Option Available
- Backless Option Available with 2 Legs

Litter Bins

Option 1: Landscape Forms "Chase Litter Bin"



- Existing Receptacle on Wilshire
- Cast Aluminum
- Front Loading

Option 2: Mmcite "Quinbin"



- Same Manufacturer as Option 2 Seating
- Two Body Shapes : Clean Cylindrical Shape and Rounded Square Base
- Irregular Fluting on Steel Frame – Precise and Subtle Detail
- With or Without Cover
- Top load with Removable Plastic Liner

Bike Racks

Bike Rack: Landscape Forms "Loop"



- Form: Simple, Sweeping Circle with Twist
- Capacity: 1 or 2 Bikes
- Aluminum Casted w/ Pangard II Powdercoat
- Sculptural & Functional

Option 2: Dero" Swerve "



Add Your Logo [Learn more](#)



- Form: Single Bent Tube at changing Radii
- Capacity: 1 or 2 Bikes w/ 2 point support
- Thick Steel Pipe Construction
- Option to Add Custom Logo

Bike Repair Stations

Bike Repair Stations to be located at the Mobility Hub, select Representative Places, and locations (space permitting) where the corridor connects with bicycle routes.

Option 1: Dero "Fixit"



- Minimal And Clean Extruded Form
- Tools securely attached w/ stainless steel cables and tamper-proof fasteners
- Hang bike for repairs
- Option for Air Kit Pike Pump Add-On

Option 2: Saris "Deluxe Public Work Stand"



- Durable
- 9 Tools securely attached w/ retractable stainless steel cables
- Hang bike for repairs
- Option for Manual Pump and Wheel Chock Attachments
- Option for branding/signage

Transit Shelter

Option 1: id Created "Hut"



- Off the Shelf
- Sleek and Light Structure. Minimal Metal Profiles and Glass Enclosure
- Modular Design of 2-4 Modules
- Options to add Display Board, Side Glass Wall, and Bench

Option 2: "3rd Street Custom"



- Custom Transit Shelter (3rd Street Bus Station Custom Pictured)
- Custom design to properly fit the new site requirements and context of the Corridors as well as streetscape palette
- Options to add amenities (Display Board, Bench, Transit Information, Digital Boards, Back Panel)

Pots/Planters | Typical

Option 1: Tournesol "Delta"



- Material: Glass Fiber Reinforced Concrete w/ Integral Color
- Sculptural Forms different from every angle – Refined and Distinctive
- Various sizes available
- Different Concrete Texture Options for Added Design Detail

Option 2: idMetalco "Eccentrica" and "Aster"



- Material: Powder Coated Steel or Aluminum, Stainless Steel, Corten Steel
- Clean and Forward Design – Handsome and Elegant
- Various Sizes Available
- Ability to Powder Coat provides great opportunity to include Color

Pots/Planters | Specialty

These specialty planters will occur at "representative areas", or where sidewalk extensions allow.

Option 1: Landscape Forms "Jules et Jim Bench & Planter"



- Material: Simconcrete – patented high performance Cast Stone
- Planter + Bench Design
- Sculptural, Elegant, and Playful
- Planter suitable for trees or plants.
- 2 Variations

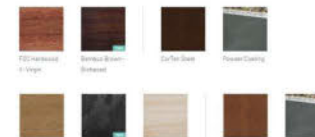
Cast Stone
acid-etched finish



Option 2: Streetlife "Green Benches, Tree Isles, & Podiums"



- Material: Powdercoated Steel with Wood or Recycled Plastic Composite Seat
- Versatile and Vibrant
- Planter + Bench Design
- Planter suitable for trees or plants.
- Range of forms (rectangular, square, round, L-shaped) – customized for a particular sidewalk condition



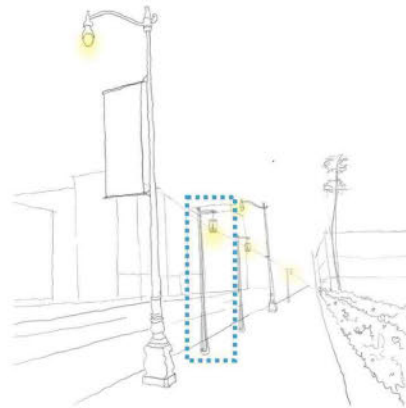
Lighting | Pedestrian Poles

Below are two options for pedestrian-scaled light poles, to be installed in-between existing street light poles.

Option 1: NERI "Chara"



Philips LLC7520/00 CityTouch

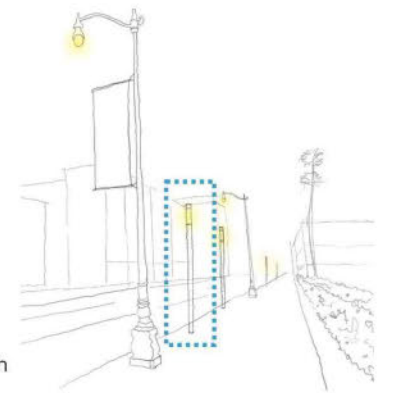


- Modern Take on Classic Lantern-Style Fixture
- Provides Character and Charm to the Streetscape
- Various options for Optic System and Lumen Output make it Versatile

Option 2: BEGA "Building Element - Unshielded"



Philips LLC7520/00 CityTouch



- Sleek, Minimal, and Refined Fixture
- Provides Asymmetrical Downlighting towards Sidewalk with 0% Uplighting

Lighting | Bollards

Bollards will be used in sidewalk conditions when the goal is to create more intimate, pedestrian-scaled lighting that supports lingering and placemaking.

Option 1: Louis Paulson "Flindt"



- Sculptural Form
- Sophisticated Light Distribution Design
- 180 degree light coverage

Option 2: BEGA



Alternative if outlets are desired



- Minimal, Sleek Design
- Even Light Distribution Design with Diffuse Opal Glass
- 360 degree light coverage

Paving | Pedestrian Access Zone - Concrete Scoring

A distinct sidewalk paving pattern and finish will be the standard for the pedestrian access zone along the corridor.

Sidewalk Scoring Option 1 - " Offset Paver "



- Joint Layout: 18" x 36"
- Offset Pattern
- Dynamic
- Strategic Placement of 1" Saw Cut Control Joints
- Construction Joints in Gray integral Color Concrete



Sidewalk Scoring Option 2 - " Squares "



- Joint Layout: 30" x 30"
- Square Pattern
- Similar to Existing Pattern along corridor
- 1" Saw Cut Control Joints
- Construction Joints in Gray integral Color Concrete



Paving | Amenity Zone - Pavers

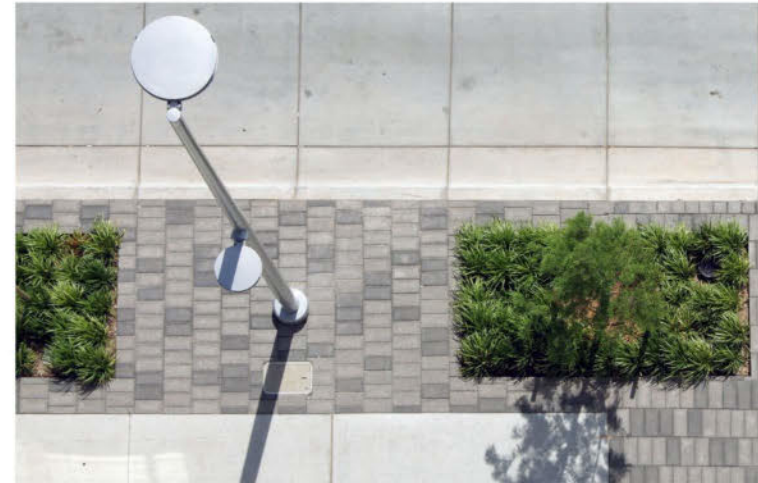
This special paving area will occur in the amenity zone closest to the curb and in some of the representative areas.

Amenity Zone Paver Option 1 - " Linear Paver "



- Precast Concrete, Sandblasted Finish
- Dimensions: 6" x 18" x 4"
- Stacked Bond in Direction of Travel (limits number of pavers to be cut)
- Easily Removed and Replaced for Utility Access and Maintenance
- Can be adapted to be Permeable

Amenity Zone Paver Option 2 - " Brick Format Paver "



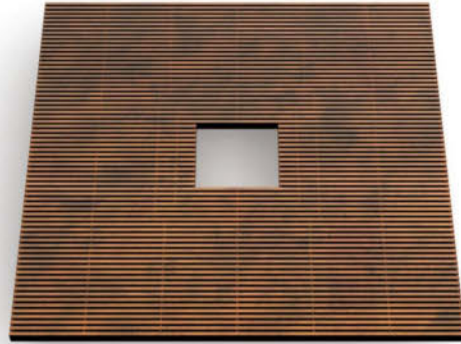
- Precast Concrete, Natural Finish with square edge
- Dimensions: 4" x 8" x 2 3/8"
- Running Bond
- Square Paver provides Even and Smooth Surface
- Easily Removed and Replaced for Utility Access and Maintenance
- Can be adapted to be Permeable



Tree Grates

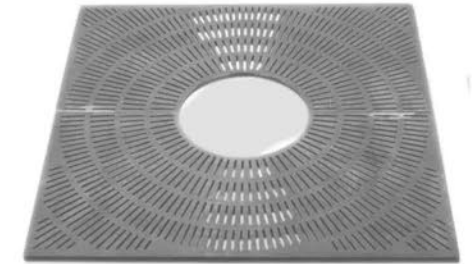
Tree Grates will only be used on sidewalk areas that are heavily trafficked, all other tree well will use DG mulch or understory planting.

Tree Grate Option 1: Broadway



- Linear Design of Uniform Parallel Bars
- Available in 36", 48" 60" Square and rectangle.
- Can be Iron, Steel, Aluminum with powdercoat and finish options

Tree-Well Option 2: Kiva



- Radial Design
- Available in 36", 48" 60" Square and rectangle.
- Can be Iron, Steel, Aluminum with powdercoat and finish options

Electrical Box Treatment

Option 1: Artist Series



Option 2: Wayfinding



Option 3: Solid Color Paint/Wrap

Streetscape Colors

Existing Colors



EXISTING:
B.H. branding



EXISTING:
light poles (slate blue)



Colors: Distinctive - Blues



Seating:
Blue stainless steel



Specialty Seating:
Yellow + Dark Blue



Trash bin:
Steel Blue



Planter:
Blue steel



Bike rack:
Dark blue aluminum



Ped Light pole:
Matte black aluminum



Bus Shelter:
White Steel



Parkway pavers



*Pewter
Concrete sidewalk*



How Can it Look?



How Can it Look?



Signage and Wayfinding

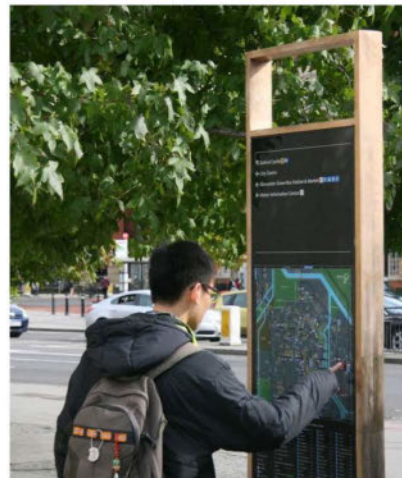
- It is recommended that Beverly Hills establish a *custom* signage design program.
- The following recommend sign types, considerations for development, and placement.



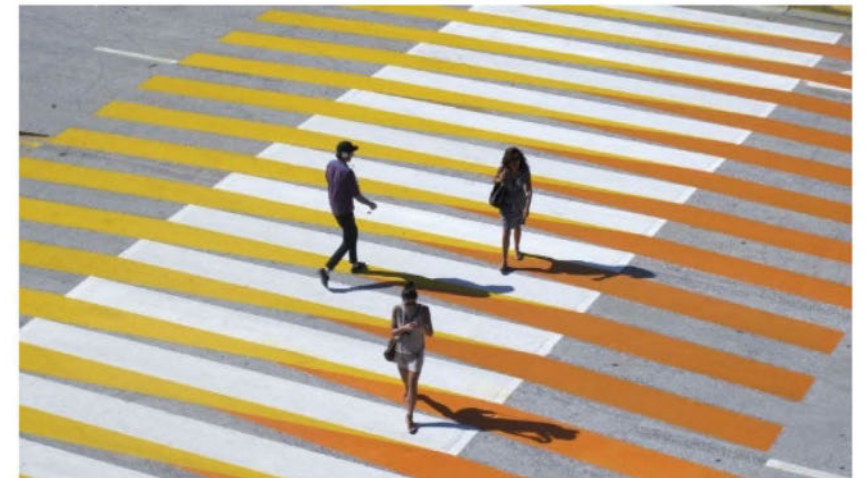
Identity



Pole-Mounted Information



Wayfinding



Crosswalk Paint

Signage and Wayfinding - Identity

Monument-Style Gateway

- Recommend placing monument-style gateway signage in planters or medians.

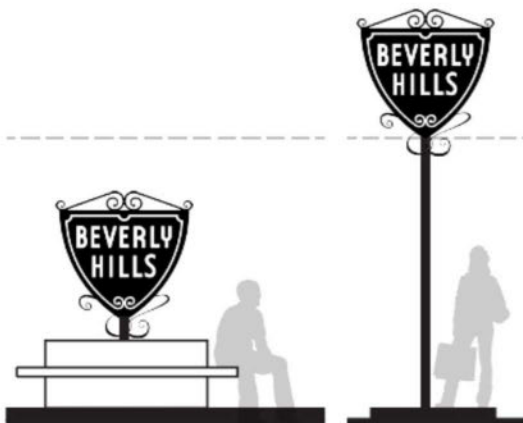


Gateway @ Median
Custom Design featuring Beverly Hills shield



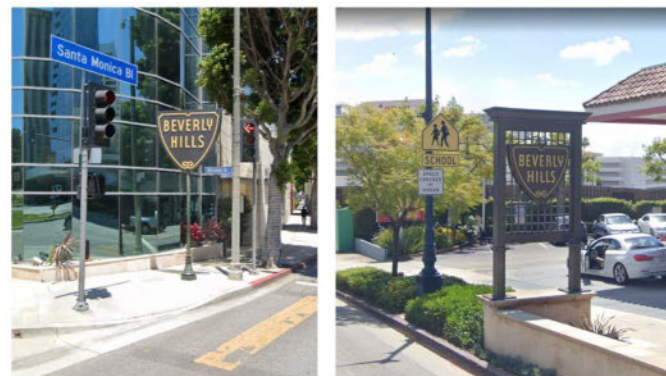
Pole Mounted Gateway

- Seal is the most important element and should be the primary focus.
- Pole mounted should be placed in medians surrounded by planting, to avoid cluttering sidewalks.



Gateway @ Planter
Custom Design
featuring Beverly Hills
shield

District ID
To match existing
District IDs



Signage and Wayfinding – Pole Mounted

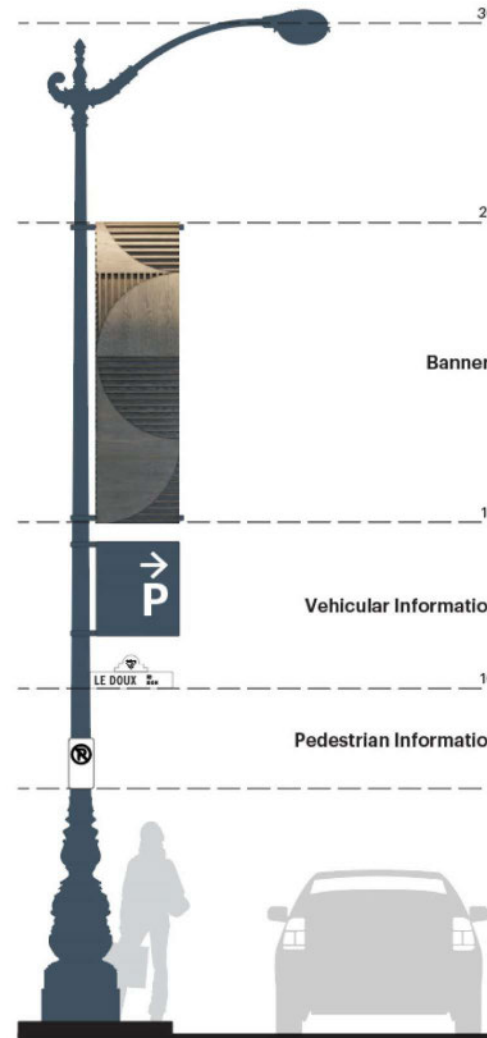
Lightpole-mounted signage should:

- be arranged in clear zones
- be orderly
- contain only one kind of information per panel

Lightpole-mounted signage should NOT:

- be overcrowded
- use more than two orientations on one pole
- repeat information on different signs

Lightpole-Mounted



Option A: One-Way Ball Filial Bracket
\$177



Option B: Trapeze Bracket
\$375



Option A: Collar Mounts for standard Metro and MUTCD signs

Option B: E-Ink updatable signs



Signage and Wayfinding - Wayfinding

Free Standing Wayfinding

Freestanding wayfinding signage should be used only where there is no existing structure available.



Freestanding Wayfinding

Custom panel designed to fit in furniture zone



Transit Stop Wayfinding

Custom mounted display panel should contain area map and information on transit lines.



Transit Stop Wayfinding

Off the shelf digital display with custom content and attachment designed to fit into selected transit shelter



Signage and Wayfinding - Mobility

Decorative Crosswalks



Decorative Crosswalks can be installed at intersection adjacent to Transit Stations. Decorative Crosswalks must be designed and approved as outlined in Beverly Hills Complete Streets Plan.

Mobility Hub | Supergraphics



Murals at the Wilshire/Vermont B Line station complement, not replace, signage

Supergraphics may offer directional information

Unexpected surfaces provide opportunity

Supergraphics can, in conjunction with graphic crosswalks, draw attention to the Wilshire/La Cienega Mobility Hub.

Existing Landscape Overview



Beverly Hills Civic Center



Beverly Gardens Park



Rodeo Drive



Maple Drive

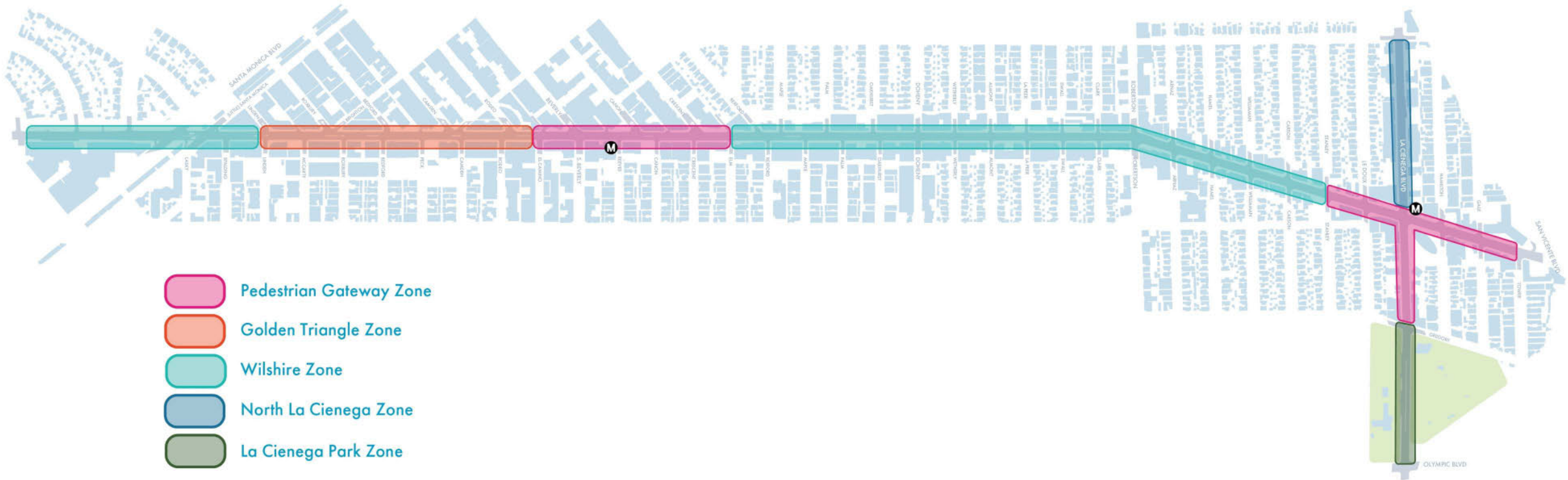


Almont Drive



N Canon Drive

Character Zones



Character Zones influence the kind of design interventions that are possible. Each Character Zone lends itself to a different mixture of landscape elements, placement of streetscape elements, and **intensity** of design enhancements. They are a way to **define** pieces of the corridor and give distinct identities to each one. The selected canopy draws from the existing Beverly Hills tree population, helping the corridor to feel integrated in the City's urban forest.

Landscape – Wilshire Zone

- Platanus racemosa and Fraxinus angustifolia are species from existing Beverly Hills Canopy.



Platanus racemosa/ Platanus x 'Bloodgood' - Deciduous



Fraxinus angustifolia 'Raywood' - Deciduous



Tristinia conferta - Evergreen



Salvia clevelandii cvs.



Olea europaea 'Little Ollie'



Westringia 'Mundi'



Erigonum fasciculatum 'Little Rascal'



Pennisetum spathiolatum



Westringia 'Smokey'



Salvia mellifera 'Little Sur'



Muhlenbergia dubia



Muhlenbergia 'White Cloud'



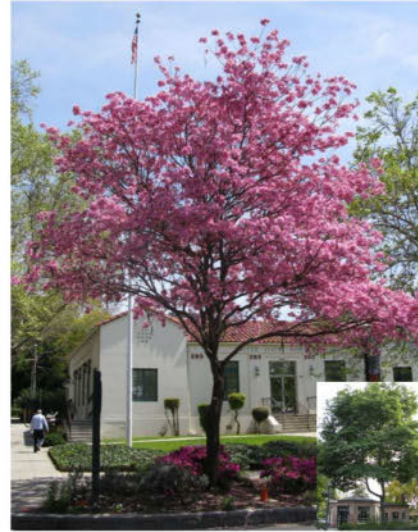
Lomandra 'Tanika'

Landscape – Golden Triangle

- Handroanthus heptaphyllus and Ceiba speciosa exist on the corridor.



Zelkova Serrata - Deciduous



Handroanthus heptaphyllus - Deciduous



Ceiba speciosa - Semi-Deciduous



Agave attenuata 'Moonshine' *pots only



Myoporum parvifolium



Heuchera maxima



Iris douglassiana *pots only



Penstemon 'Margarita BOP'



Achillea millefolium 'Moonshine'



Eriogonum grande var. rubescens



Amaryllis belladonna *pots only



Teucrium chamaedrys



Rosmarinus officinalis (prostrate)



Bouteloua 'Blonde Ambition' *pots only



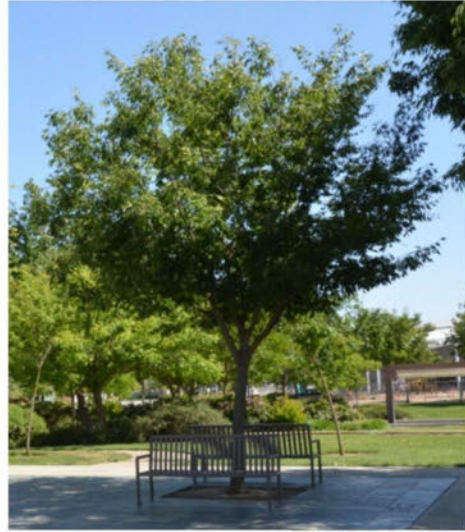
Lomandra 'Evergreen Baby'



Pennisetum spathiolatum

Landscape – Pedestrian Gateway

- *Zelkova serrata* and *Koelreuteria bipinnata* are from existing Beverly Hills Canopy.



Zelkova Serrata - Deciduous



Koelreuteria bipinnata - Deciduous



Cupaniopsis anacardioides - Evergreen



Pistacia chinensis - Deciduous



Agave attenuata 'Moonshine'



Teucrium chamaedrys



Verbena lilacina 'De La Mina'



Westringia 'Mundi'



Eriogonum fasciculatum 'Little Rascal'



Eriogonum grande var. *rubescens*



Achillea millefolium 'Moonshine'



Lomandra 'Tanika'



Pennisetum spathiolatum

Landscape – North La Cienega

- Tipuana tipu is from existing Beverly Hills Canopy.
- Cupaniopsis anacardioides serves as a replacement for existing Ficus. It provides a similar aesthetic and habitat and shade benefits.



Cupaniopsis anacardioides - Evergreen



Tipuana tipu



Muhlenbergia dubia



Pennisetum spathiolatum



Westringia 'Mundi'



Westringia 'Smokey'



Eriogonum fasciculatum 'Little Rascal'



Salvia mellifera 'Little Sur'



Salvia clevelandii cvs.



Olea europaea 'Little Ollie'



Muhlenbergia 'White Cloud'



Lomandra 'Tanika'

Landscape – La Cienega Park

- Jacaranda mimosifolia is from existing Beverly Hills Canopy.



Jacaranda mimosifolia - Deciduous



Handroanthus heptaphyllus - Deciduous



Iris douglassiana



Olea europaea 'Little Ollie'



Westringia fruticosa



Verbena lilacina 'De La Mina'



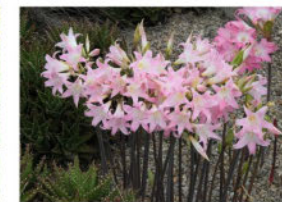
Myoporum parvifolium



Muhlenbergia 'White Cloud'



Lomandra 'Tanika'



Amaryllis belladonna



Heuchera maxima

Questions to consider

- Do you think the design standard options are representative of Beverly Hills?
- From a Mobility and Pedestrian experience perspective, is there a preferred design standard option in each category of sidewalk amenity? If not, what stylistic or aesthetic features are missing from the options?
- Do you support use of these street standards along Wilshire and La Cienega Boulevards?
- Would you support using these street standards on other corridors in the City?



Project Next Steps



- Draft plan published for public comment
- TPC reviews draft plan in late Spring 2021
- TPC reviews final plan and makes a recommendation to City Council on plan adoption in Summer 2021